

HOW TO PACKAGE A HUMAN?

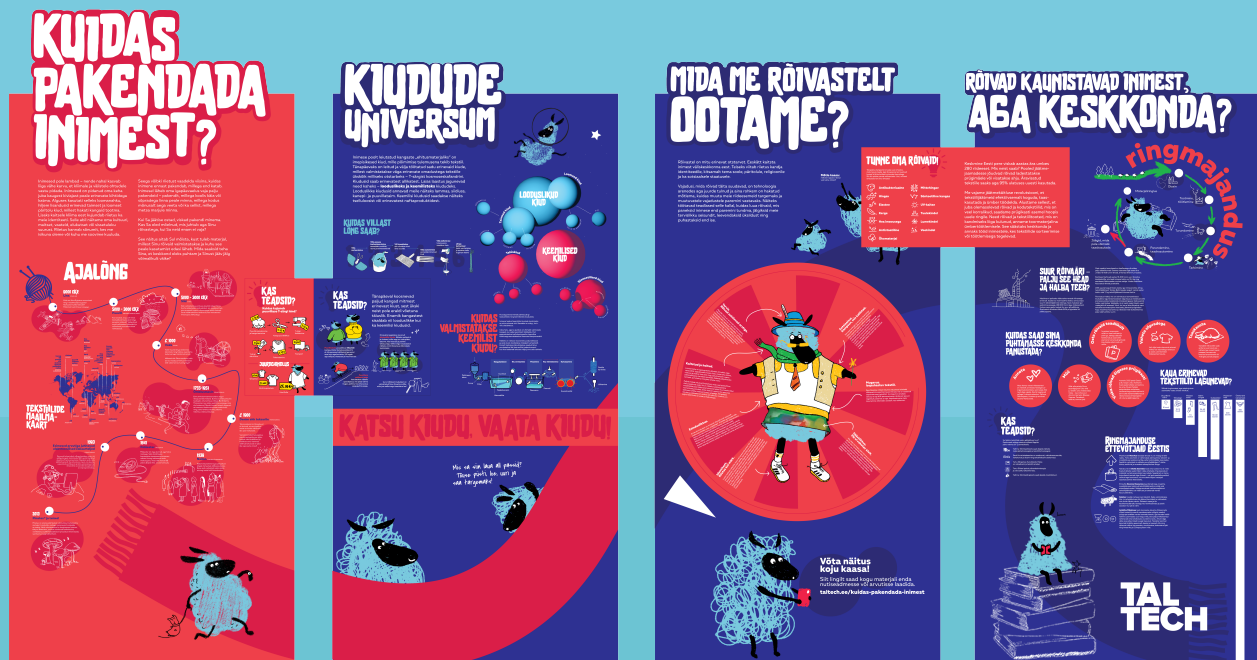
TalTech's traveling exhibition in schools

A compact, plug-and-play travelling exhibition on wheels. Easily portable – just plug it in and you're done!

Fitting on only one square meter the exhibition is packed with interesting facts and worked through to the last detail visually. Especially having in mind that it needs to be interesting and catchy for young and teenage school students.

Interactive, with lots of moving parts, the expo allows them to touch the textile samples and to spin the wheel of Vitruvian lamb.

Behind the QR codes the students can find in-depth articles of each material – the history, how they are manufactured and used. Additionally, the exhibition can be taken home virtually, as one of the QR codes gives you access to a pdf file with the entire exhibition's pictures and materials, which can be downloaded and used in classes.



Content by TalTech's Museum and material scientists.
Concept, architecture, illustrations and texts from the agency.